

Gravity Air Removal



LAC - 5040S / 5060S Model
Mechanical Swing Door



LAC - 5080SD / 5100SD Model
Heavy-Duty Raise Door

*Ideal for Bottle, Vessels, Agar
Medical waste sterilization*

- * Ideal for Liquid and culture Media, Vessel, Fermentors
- * Microprocessor Controlled Fully Automatic Sterilizing Operation
- * Complete Safety Pressure Mechanism
- * Water level sensor with signal lamp
- * Electric Components Room and Steam line is isolated for Safety
- * Simple and Sturdy Design with Safety Mechanism
- * Sterilization Temperature up to 134°C
- * PID Digital Controller with LED Display (S model)
- * 5 Step Program Controller with LCD Display (P model)
- * Door Locking Limit Switch can secure the Complete Door Closing for Safety

Fully Automatic Sterilization Process

Push just one button to operate from start to finish

Safe and Convenient Operation

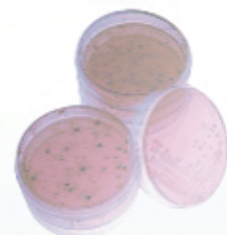
Over temperature, pressure, current over leakage protection, automatic over pressure release valve ensure user safety

Microprocessor PID Control and Display

Dual display for current and set temperature and time remaining, sterilization process signal lamp

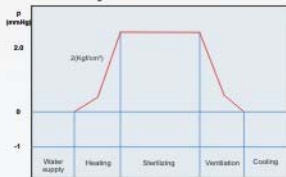
5 Step Programmable Microprocessor Controller

Most frequent used set temperature and time for sterilization can be programmed by user's purpose
Program controller models only

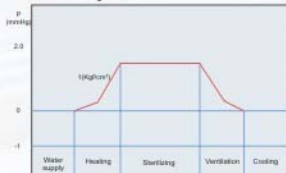


Class N Sterilization

134°C cycle



121°C cycle



Sterilization Cycle

Start - Heat up - Sterilization -
Ventilation - Natural Cooling - End



LAC - 5040S / 5060S Model



LAC - 5080SD / 5100SD Model



Wire Basket



Perforated Basket



Plain Basket

Optional Recorder



Channel 1 : Temperature
Channel 2 : Pressure
Pressure Sensor : optional

Specification

Model		LAC-5041P	LAC-5061P	LAC-5081SD	LAC-5101SD
Controller		Programmable Digital PID Controller			
Model		LAC-5040S	LAC-5060S	LAC-5080SD	LAC-5100SD
Controller		Manual Set Digital PID Controller			
Dimensions	Exterior	W 670 x D 560 x H 950mm	W 670 x D 560 x H 1050mm	W 860 x D 650 x H 1000mm	W 860 x D 650 x H 1150mm
	Chamber	φ 350 x 420 (H)	φ 350 x 630 (H)	φ 450 x 500 (H)	φ 450 x 630 (H)
Capacity		40 Liters	60 Liters	80 Liters	100 Liters
Material	Exterior	Heavy-duty Epoxy Resin Powder coated EGI steel			
	Chamber	Stainless Steel 304 (STS 316 L Option)			
Power Consumption		3 KW	3 KW	5 KW	5 KW
Temperature	Range	105°C to 135°C			
	Accuracy	± 0.5°C at 121°C			
Display		PV & SV Dual Digital Display Temperature, Time operation cycle indication			
Controller		Microprocessor PID Multi-Function Controller			
Sterilization Timer		0 -90 min			
Working Pressure		2.0 kg/cm ² at 132°C			
Gauge		0 - 4 kg/cm ²			
Door Packing		Mechanical Swing Door Handle Type			
Safety		Over temp. Over pressure and Over current Protector, safety release valve			
Basket		2 EA of stainless steel wire basket included			
Electric Supply		110V 60Hz or 220V 50/60Hz			

Optional Basket	40 Liter	60 Liter	80 Liter	100 Liter
Perforated Basket	BS - 40PF	BS - 60PF	BS - 80PF	BS - 100PF
Plain Basket	BS - 40PI	BS - 60PI	BS - 80PI	BS - 100PI