

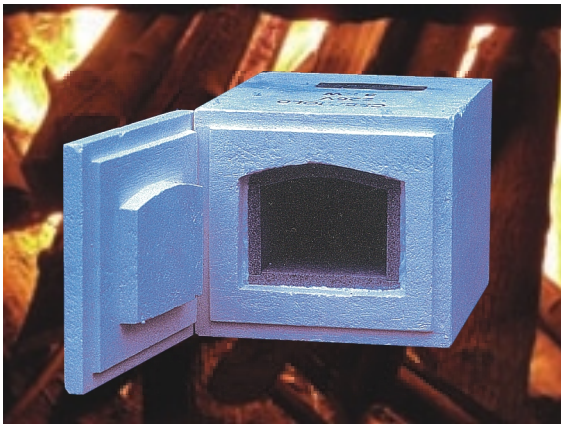


LEF-P type

- ❖ Choice of 3 ℓ to 27 ℓ capacities
- ❖ Exhausted Gas Outlet Port
- ❖ 1200 °C Maximum
- ❖ Microprocessor PID Controller
- Program Pattern, 16 Segment
- 3 Program Pattern
- Auto on-off Time Setting Function



LEF-S type



Molded Ceramic Fiber Insulation

Application

Ideal for ashing organic and inorganic samples, heat treating metals, ignition test, gravimetric analysis and determination of volatiles and suspended solids.

Microprocessor PID Controller

Provides accuracy and reliability, set point and actual temperature dual display.

설정온도와 현재온도가 동시에 디스플레이 되는 마이크로 프로세서 PID 온도 조절기

Molded Ceramic Fiber Insulation

and air jacked dual case stainless steel provide a compact and perfect working condition

진공성형된 세라믹 단열재를 사용한 컴팩트한 구조와 이중의 스테인레스 스틸 케이스로 제작하여 공기층을 형성하여 이상적인 작업환경 제공

Embedded Heating Element

Replaceable embedded heating elements installed in 4 sides provide a uniform heating level and a long life against corrosive gas, water vapor and contamination

4면에 설치된 매몰식 열판으로 균일한 히팅환경을 제공하고 특히 부식성 가스, 수증기, 오염물질로부터 발열체를 보호하여 내구성이 뛰어나고 열판을 쉽게 교체할 수 있음

Model		LEF-103S	LEF-105S	LEF-115S	LEF-130S
Controller		Digital PID Controller			
Model		LEF-203P	LEF-205P	LEF-215P	LEF-230P
Controller		Microprocessor Step Program Controller			
Dimensions (W x D x H mm)	Inner	130 x 250 x 90	150 x 300 x 100	250 x 350 x 160	300 x 300 x 300
	Outer	390 x 470 x 490	420 x 530 x 510	530 x 585 x 580	580 x 590 x 725
Chamber Capacity		3.0 ℓ	4.5 ℓ	14 ℓ	27 ℓ
Watt		2000 w	3000 w	5000 w	6000 w
Temperature		Up to 1200 °C Max			
Output Regulator		SSR unit control			
Thermocouple		K type CA Sensor			
Heating Element		Kanthal			
Insulation		Vacuum Molded Ceramic Fiber			
Material		Stainless steel			
Electric Supply		220V 1Phase or 3 Phase 50/60Hz			

☒ Custom made order is available
Specifications can be changed without prior notice for quality improvement.