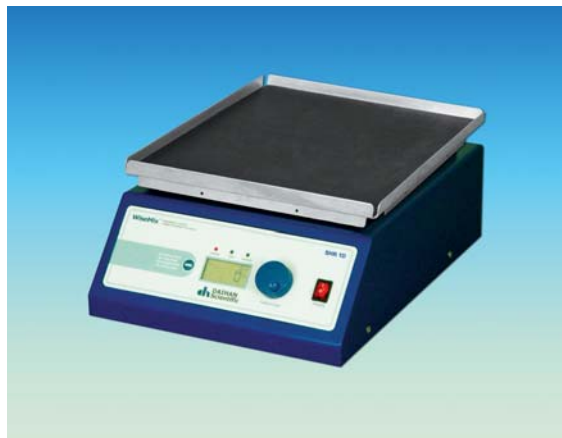


“DAIHAN” *WiseShake*[®] *SHO* Digital Orbital Shaker

With Digital Feedback Control, Programmable Operation, 10~300 rpm

Specification

Model	SHO-1D	SHO-2D
Motor	Brushless DC Motor	
Dimension (w×d×h mm)	250×330×150	400×480×160
Base Platform Size (mm)	230×230	350×350
Max. Load (kg)	8	10
Amplitude of Rotation (mm)	10, 15, 20 Available. (15 as Factory default)	20, 30, 40 Available. (30 as Factory default)
Speed Range (rpm)	10 ~ 300	
Controller	Programmable Digital Feedback Controller with Jog-Shuttle Switch (Turn + Push)	
Program Function	10 Steps, 6 Programs	
Display	Digital LCD Display (Timer, RPM and Power bar-graph)	
Platform	Universal Platform for various Shapes & Size of Flask	
Holder	Durable & Flexible Plastic Flask holder	
Safety Device	Over Load Protector for motor	
Weight (kg)	14	20
Others	Smooth Start and Change of the Stirring Speed for stable running Storage Function (Program, RPM, Timer) Locking Mode (Jog-Shuttle Input disabled) Alarm (for Error Status and Timer-end)	
Power Supply*	Free Voltage (AC 80V~240V, 50/60Hz)	



SHO-1D with Rubber Mat Platform (SP110)



SHO-2D with Universal Platform (SP200)

Ordering Information

DH.WSO04010 Digital Orbital Shaker, SHO-1D, without Platform
DH.WSO04012 , SHO-2D, without Platform

Accessories

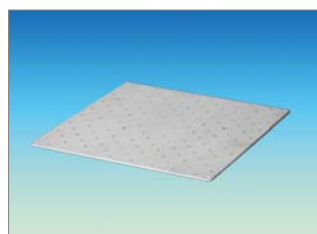
DH.WSO504100 Universal Platform for SHO-1D, **SP100**, w230×d230mm
DH.WSO504110 Rubber Mat Platform for SHO-1D, **SP110**, w270×d270mm
DH.WSO504200 Universal Platform for SHO-2D, **SP200**, w350×d350mm
DH.WSO504210 Rubber Mat Platform for SHO-2D, **SP210**, w370×d370mm
DH.WIS504030 Flask Holder for Shaker, **FH100**, 50~100ml
DH.WIS504035 Flask Holder for Shaker, **FH250**, 200~300ml
DH.WIS504040 Flask Holder for Shaker, **FH500**, 500~1000ml

Applications & Features

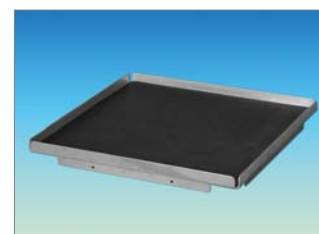
- Ideal for Culturing Cells to Hybridization, Staining and Destaining Gels, and Combinatorial Chemistry.
- Optimal Platform Rotation for Intensive Mixing
- Brushless DC motor (Low Noise & Long Life Cycle)
- High Precision Digital Rotation Speed Control
- Programmable operation modes supported
- Convenient Setting of Timer and Speed using Jog Shuttle Switch
- Smooth Start and Change of the Shaking Speed
- Universal Platform for Easy and Fast Fixation of Any Kind Flasks and Bottles (Option), Over- Load Protection
- Storage function, Alarm
- Locking Mode supported for Experimental Safety (Input to Jog-Shuttle can be disabled)
- Variety of Optional Accessories are available



Flask Holders



Universal Platform



Rubber Mat Platform